

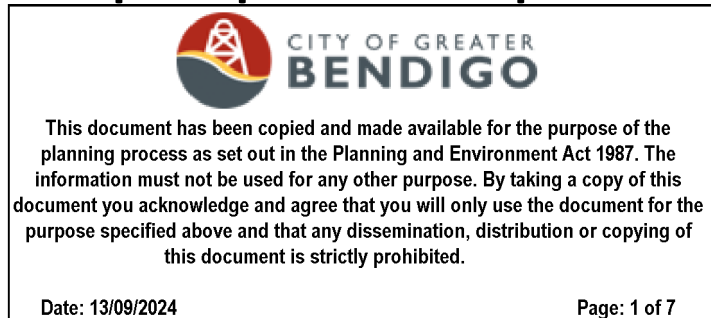


Cathedral Square – Green Travel Plan

Bendigo Sacred Heart Cathedral Precinct retail, café, office, and public open space development

March 2024

1. Introduction



This Green Travel Plan is to document strategies to promote sustainable transportation practices among employees, tenants, and visitors of the retail, cafe, and office development proposed for the Cathedral Square development at the Sacred Heart Cathedral precinct in central Bendigo. By encouraging the use of environmentally friendly transportation modes by employees, tenants, and visitors, we aim to reduce carbon emissions, alleviate traffic congestion, and contribute to the overall well-being of the community and the environment.

2. Objectives

- Reduce the carbon footprint associated with commuting and travel to and from the development.
- Reduce the need to use cars to access the development.
- Promote sustainable transportation modes such as walking, cycling, public transport, and carpooling.
- Enhance the accessibility and convenience of sustainable transportation options for employees, tenants, and visitors.
- Raise awareness about the environmental and health benefits of green travel and encourage behaviour change.
- Continuously monitor and evaluate the effectiveness of the Green Travel Plan and make necessary adjustments.





3. Strategies

3.1. Public Transport Promotion

- Provide information to employees, tenants and visitors about nearby bus stops and the train station, including schedules and routes. Example Appendix A.
- Install signage within the development to highlight public transport options.
- Encourage and enable staff to use train services for work travel to Melbourne, and to walk, cycle or scoot for local Bendigo work travel.

3.2. Alternative Transport Promotion:

- Provide information about local cycling routes and dedicated bike paths that provide access to the precinct.
- Provide information about the Bendigo Heritage Attractions' tram service, including schedules, routes and parking options at each end of the line.
- Continue to promote the benefits of a new tram stop on High Street between Short and Wattle Streets.
- Provide information about the new (trial) e-Scooter services, including how to access them, pricing and areas covered.
- Provide information about taxis and other ride-share options, such as Uber and Shebah as alternatives to single-occupancy vehicle trips.

3.3. Car pooling and fleet cars:

- Minimise single-occupancy vehicle trips.
- Provide shared fleet cars with designated on-site car parks for office employees.
- Encourage employee car pooling through internal communications.

3.4. Bike-Friendly Infrastructure:

- Install bike racks in convenient and secure locations throughout the development. (Refer Sustainability Management Plan, Traffic Engineering Assessment and Architectural and Landscaping drawings.)
- Provide end-of-trip facilities (showers, changing rooms, and bike repair stations) to support cyclists.
- Offer incentives such as discounts or rewards for employees and tenants who commute by bicycle.



3.5. Electric Vehicle Infrastructure:

- Provision for electric vehicle charging in on-site parking areas to support and encourage electric vehicle use.

3.6. Walking Accessibility:

- Ensure that footpaths and pedestrian areas are well-maintained and easily accessible.
- Create pedestrian-friendly zones within the development with seating, greenery, and amenities.
- Implement wayfinding signage to encourage walking and facilitate navigation.

3.7. Employee Incentive Programs:

- Establish carpooling initiatives with incentives such as rewards programs.
- Implement flexible work policies that allow employees to work remotely when feasible.
- Offer flexible work hours to reduce peak-time commuting congestion.
- Recognise and reward employees who consistently choose sustainable transportation options.

3.8. Visitor Engagement:

- Improve accessibility between High Street and Sacred Heart Cathedral.
- Provide visitors with information about sustainable transportation options through signage, brochures, and digital platforms.
- Encourage visitors to explore the area on foot, bicycle or scooter by highlighting other nearby attractions and points of interest, including Bendigo Art Gallery, Golden Dragon Museum, Rosalind Park, Discovery Centre and Central Deborah Gold Mine.
- Collaborate with local tourism organisations to promote sustainable travel practices among visitors.

3.9. Collaboration and Community Engagement:

- Collaborate with local government agencies, transport authorities, and environmental organisations to promote sustainable transport initiatives.
- Engage with the local community by supporting workshops, events, and educational programs to raise awareness about green travel, such as through the Bendigo Sustainability Group.
- Participate in community forums and advisory groups to stay informed about transportation-related issues and opportunities.



- Share success stories and best practices with neighboring businesses and developments.

4. Monitoring and Evaluation

- Regularly assess the effectiveness of the Green Travel Plan through surveys, feedback mechanisms, and data analysis.
- Solicit feedback from employees, tenants, and visitors to identify areas for improvement and make adjustments accordingly.
- Conduct annual reviews to assess progress towards achieving the objectives of the Green Travel Plan and identify opportunities for enhancement.

5. Conclusion

By implementing the strategies outlined in this Green Travel Plan, the Cathedral Precinct Redevelopment in Bendigo can become a leader in sustainable transportation practices. Together, we can reduce our environmental impact, improve air quality, and create a healthier, more vibrant community for everyone.



This document has been copied and made available for the purpose of the planning process as set out in the Planning and Environment Act 1987. The information must not be used for any other purpose. By taking a copy of this document you acknowledge and agree that you will only use the document for the purpose specified above and that any dissemination, distribution or copying of this document is strictly prohibited.

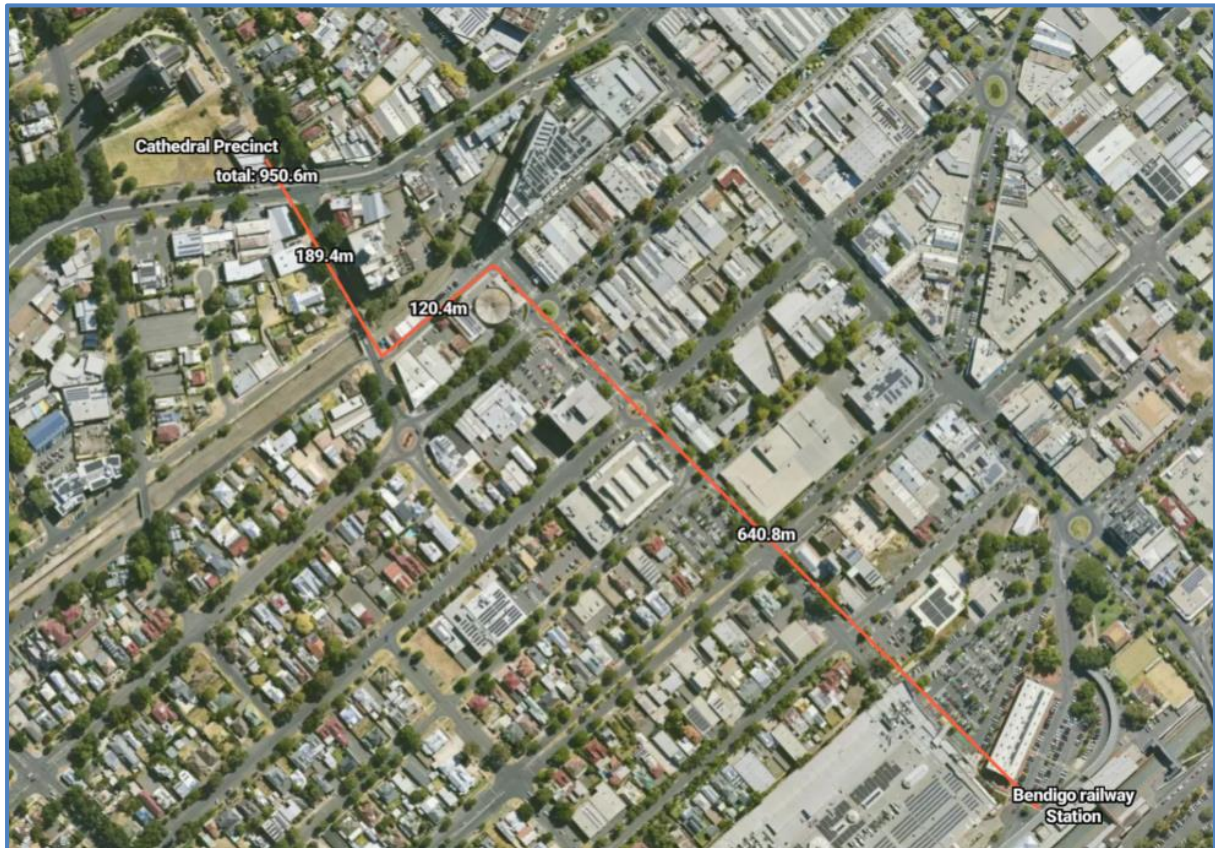
Date: 13/09/2024

Page: 4 of 7



6. Appendix A – Public Transport options

Train – 950m walk:



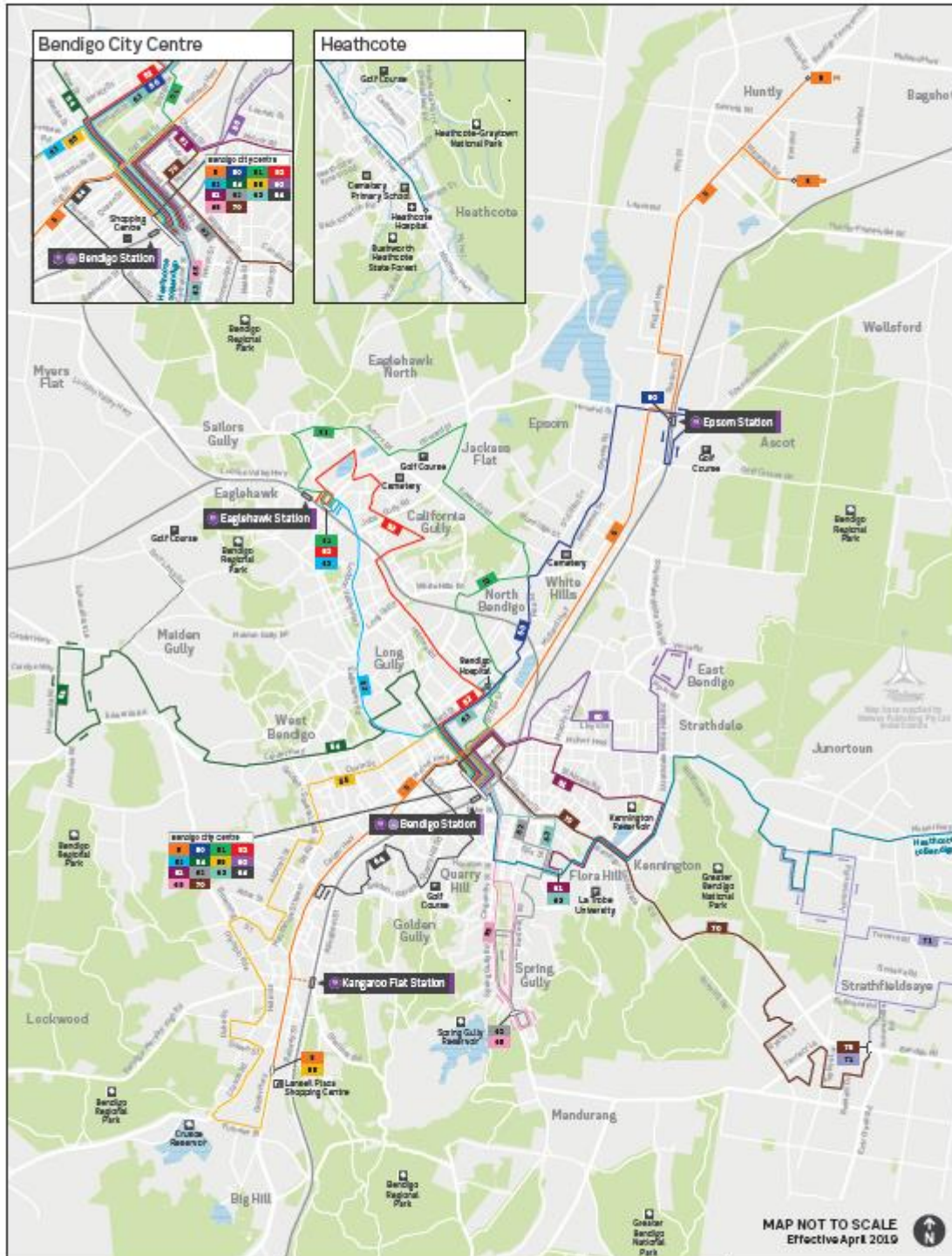
This document has been copied and made available for the purpose of the planning process as set out in the Planning and Environment Act 1987. The information must not be used for any other purpose. By taking a copy of this document you acknowledge and agree that you will only use the document for the purpose specified above and that any dissemination, distribution or copying of this document is strictly prohibited.

Date: 13/09/2024

Page: 5 of 7



Bendigo bus network



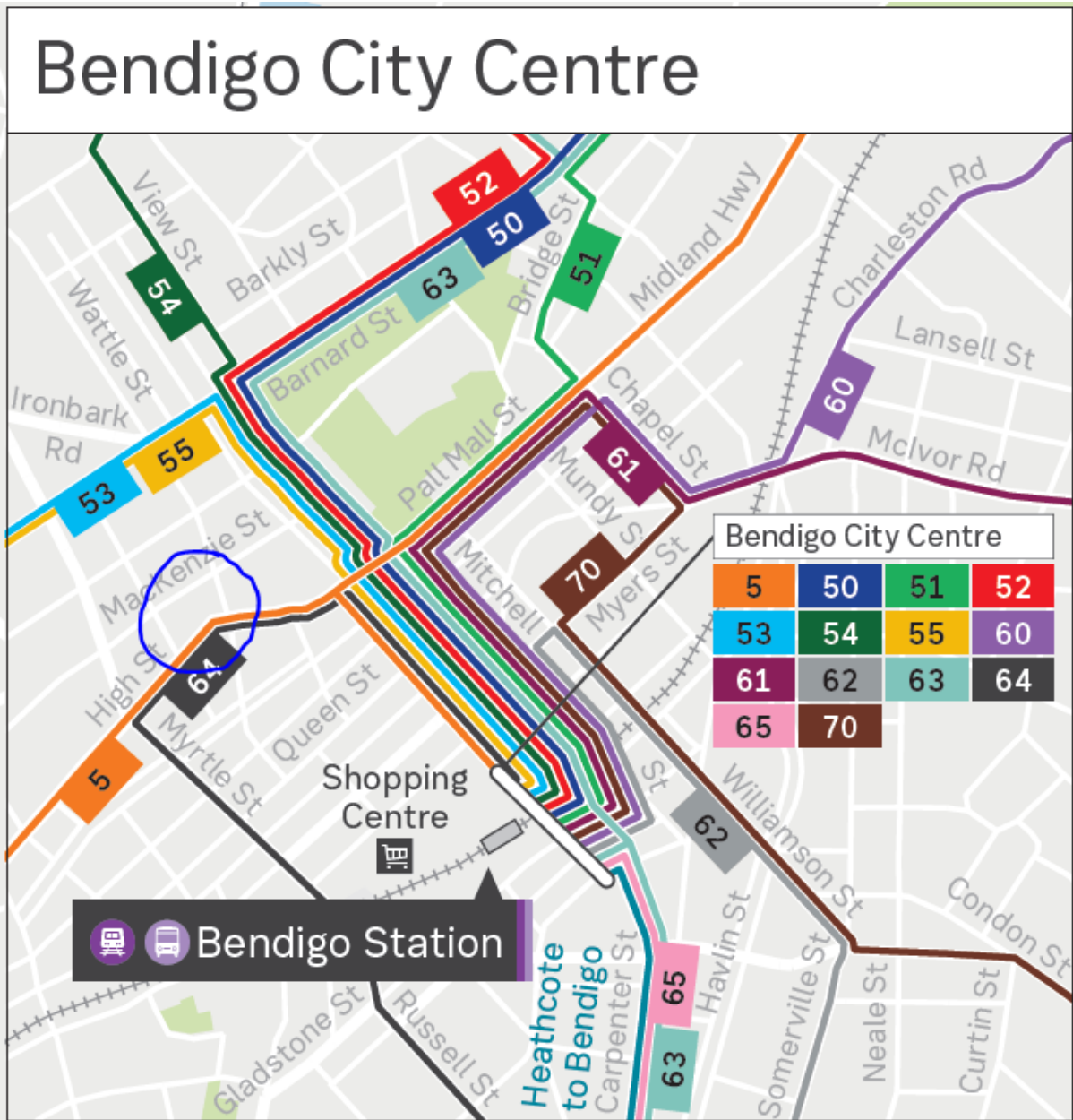
For more information visit ptv.vic.gov.au or call 1800 800 007.




This document has been copied and made available for the purpose of the planning process as set out in the Planning and Environment Act 1987. The information must not be used for any other purpose. By taking a copy of this document you acknowledge and agree that you will only use the document for the purpose specified above and that any dissemination, distribution or copying of this document is strictly prohibited.



Bus – Routes 5 and 64 at front of Development





CITY OF GREATER BENDIGO

This document has been copied and made available for the purpose of the planning process as set out in the Planning and Environment Act 1987. The information must not be used for any other purpose. By taking a copy of this document you acknowledge and agree that you will only use the document for the purpose specified above and that any dissemination, distribution or copying of this document is strictly prohibited.

Date: 13/09/2024
Page: 7 of 7